

THAILAND

ALL INCLUSIVE - ROUND TRIP

Private driver-guided Thailand road trip itinerary

- Amazing Thailand + Spa & Wellness

TourTH.com



- Departing from Phuket

- Luxury Hotels, Resorts & Hideaways

- Luxury Cars Fleet of Vehicles

- Fully Flexible Departure Dates

- Fully Escorted Itinerary

20 DAYS | 19 NIGHTS | 21 TOWNS

*Make your private journey
through Thailand happen...*



With Private Chauffeur Driven Tour





- ▶ **DISCOVER** *History, Culture and Nature of Thailand..*
- ▶ **EXPLORE** *an Uncharted Side of Thailand..*
- ▶ **LEARN** *Thailand Culture and Tradition by Regions..*
- ▶ **TASTE** *Authentic and Delicious Thai Food by Regions..*
- ▶ **SLEEP** *& Relax in Luxury Hotel Hideaways & Romantic Retreats..*
- ▶ **ENJOY** *an Amazing and Unforgettable Experience.*

▶ *From South to West Thailand*

▶ *From West to Central Thailand*

▶ *From West to North Thailand*

▶ *From North to North-East Thailand*

▶ *From North East Thailand*

▶ *Back to Southern Thailand*

TOURTH.COM

Bespoke Luxury Travel

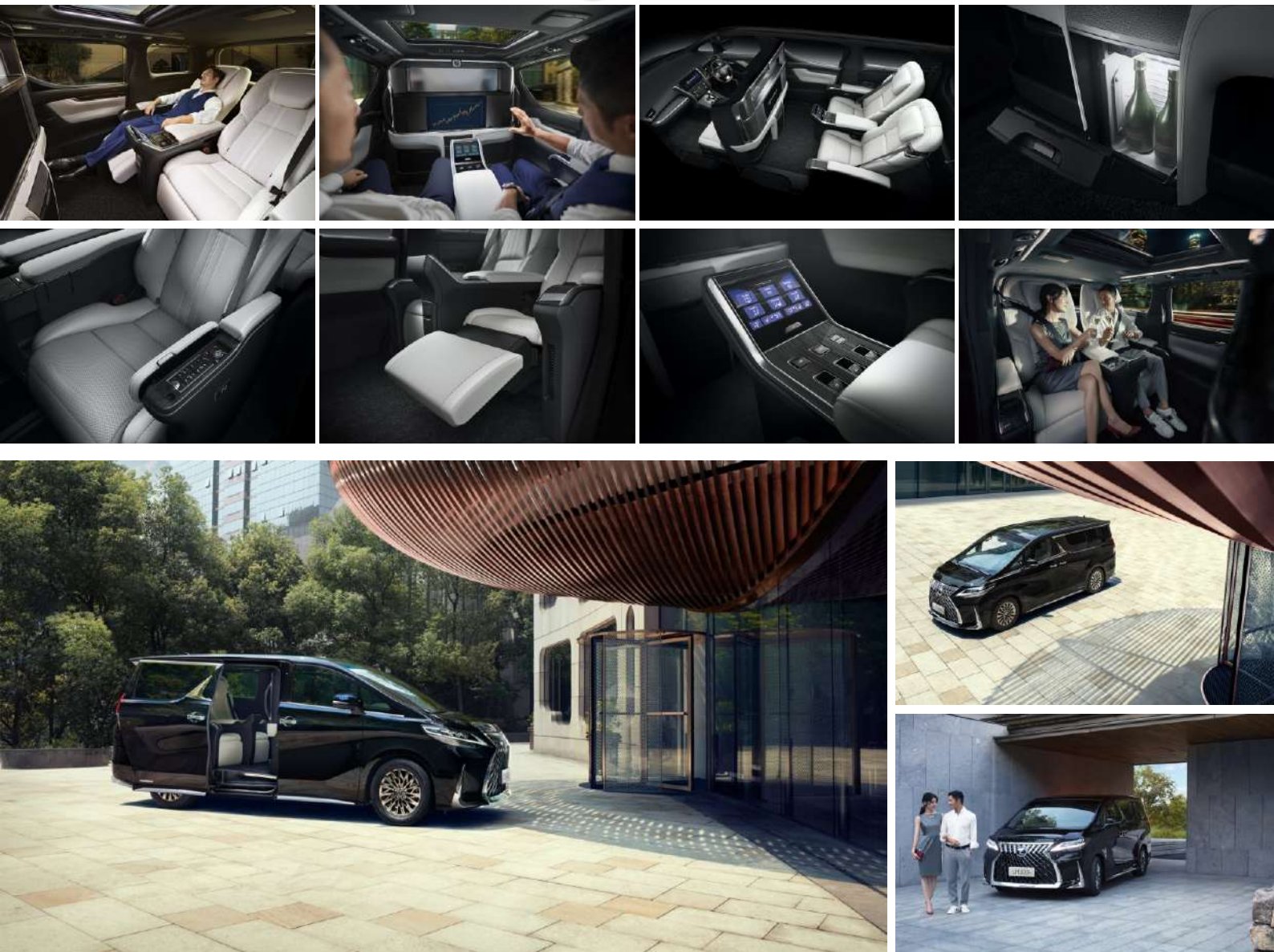
Private Chauffeur Guided Vehicle

Prestige LEXUS LM300h

Lexus LM places profound importance on preserving absolute privacy during precious personal time with the exquisitely crafted interior that provides a refined sense of luxury and welcome imbued with impeccable sensibility, while fusing a comprehensive range of innovative features and discreetly integrated technology. For the first time in the world, Lexus LM features low resilience urethane foam as an innovative seating foam developed to provide outstanding comfort during the ride whether it is for business purpose or personal leisure.

Learn More About New Lexus LM300h 

Mobile Private Lounge



Private Chauffeur Guided Vehicle

Luxury THAIYARNYON T69

A unique piece of Thai craftsmanship that gives luxury and comfort a new dimension. The interior welcomes you with exclusive, high-quality materials, elegant and spacious with finest Dakota leather-upholstered VIP ergonomic seats -fully electrically adjustable, leaning up to 180 degrees make every journey a first-class experience. Commitment to perfection in all details visibly position the car in the highest luxury segment.

Learn More About VW-T69 

Perfection in Every Detail - VW Caravelle



Private Chauffeur Guided Vehicle

Executive

CARAVELLE T6



Uncompromised comfort.

Saloon interior comfort allowing even 4 passengers to travel in uncompromising comfort. The angle lie-flat seats allows passengers to recline to a near 180 degrees, with a electrically adjatable foot rest. Complete with state of the art technology. Wi-Fi, 32inch flat screen. Surround system sound - DVD/iPod/Bluetooth/, USB, Wi-Fi, Google Home & Screen Mirroring. MPEG-4 Digital Video Recorder with front view installed camera.

Subdued Cruising

The cabin is remarkably well-sealed from wind noise, allowing you to have the politest of conversations with next-seat passenger even during a faster motor way cruise. Electric controlled cabin glass privacy divider.

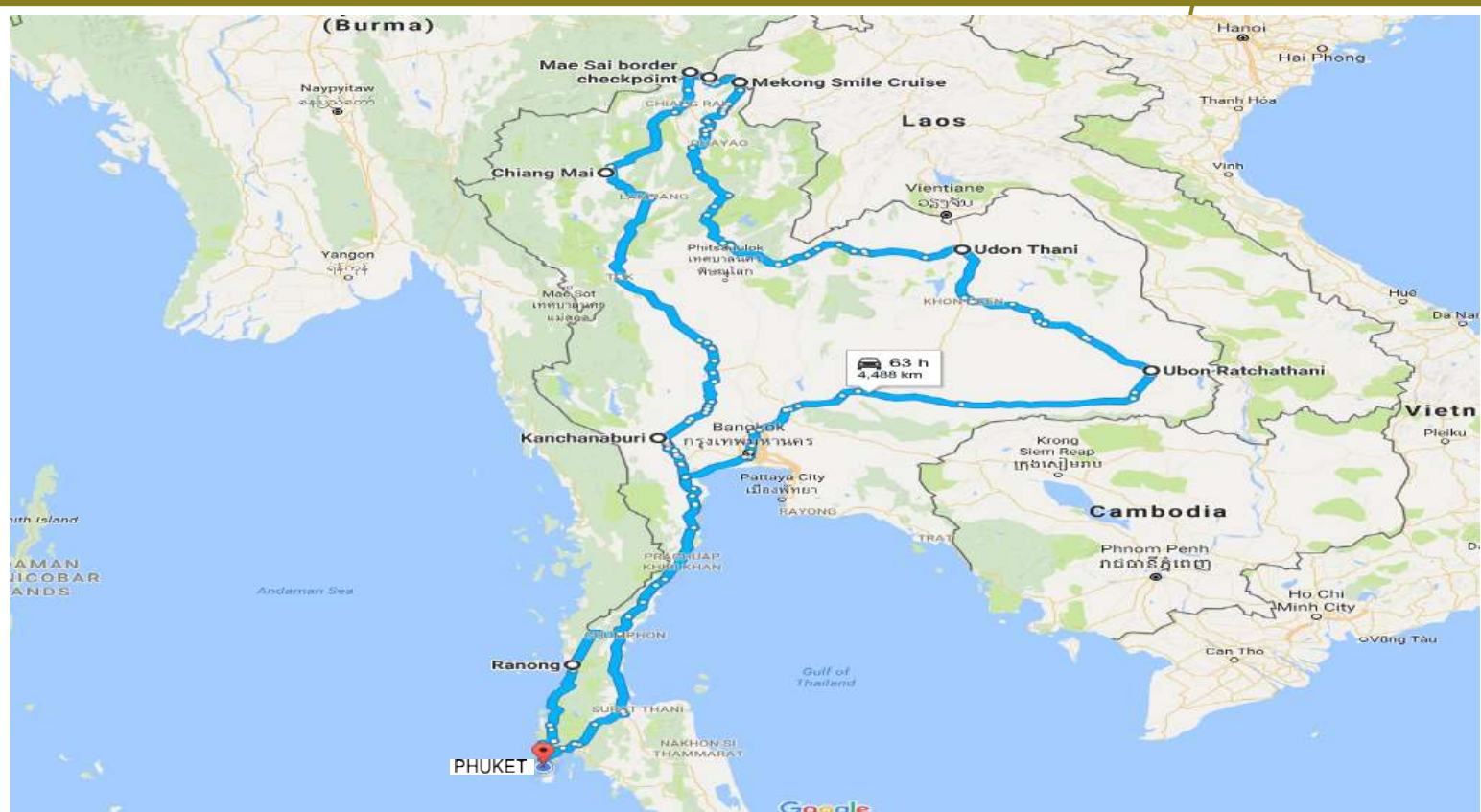
Extraordinary Refined Drive

Our carefully selected a highly experienced and exceptionally skilled drivers ensuring your maximum driving pleasure is achieved and nerveless that you have a very safe and unforgettable journey.

20 DAYS 19 NIGHTS KM COUNTER 4599

All Inclusive Luxury Package

- ▶ Accommodation
- ▶ Meals
- ▶ Spa & Wellness
- ▶ Health Well-being
- ▶ Fitness
- ▶ Transport
- ▶ Round-trips
- ▶ Guides
- ▶ Attractions
- ▶ Insurance
- ▶ 19 nights in Premium rooms
- ▶ 2 meals daily: Breakfast and Dinner
- ▶ 4 packages with Massage and Spa Treatments
- ▶ 2 physiotherapy, holistic, nutrition and aesthetic beauty
- ▶ Free access in all Hotels
- ▶ Fully Escorted Trip - Included
- ▶ Sightseeing arrangement -included
- ▶ Our own & locally sourced guides -included
- ▶ Access for all organized attractions -included
- ▶ Super Collision Damage Waiver (SCDW) Personal Accident Insurance (PAI) Theft Protection (TP) Tire Waiver (TW), More details on request



01

TRIP COUNTER 01 DAYS

TRIP DISTANCE 428KM

► *Phuket*

► *Phang Nga*

► *Surat Thani*

► *Chumphon*

KM COUNTER 428



Highlights



POI

- *Sarasin Bridge*
- *Phang Nga*
- *Krom Luang Chumphon Khet*
- *Chumphon*



HOTEL

Sara Boutique Resort ★★★★★



01

1 Night Stop

TRIP COUNTER

01 DAYS

SARA BEACHFRONT BOUTIQUE RESORT



► *Estate Suite*

► *Rating 4.5*

► *5-Course Dinner*

► *SHA+*

► *In-Room Massage*

► *In-Room Breakfast*



02

TRIP COUNTER 02 DAYS

TRIP DISTANCE 275KM

KM COUNTER 703

► Chumpon

► Prachuap Khiri Khan

► Hua Hin



Highlights



POI

- Ao Manao
- Wing 5
- Hua Hin Hills Vineyards
- Wat Tha Sung (Chantaram)



HOTEL

Cape Nidhra Hotel



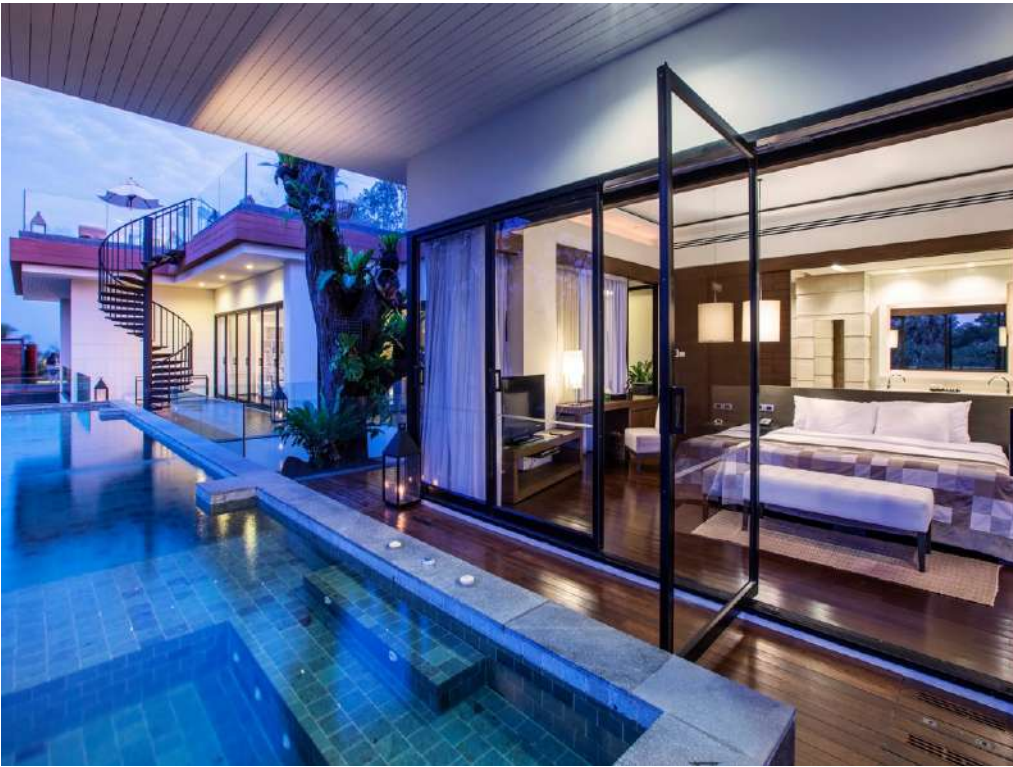
02E

2 Night Stop

TRIP COUNTER

02 DAYS

CAPE NIDHRA HUA HIN



► *Nidhrarom Suite*

► *Rating 4.7*

► *5-Course Dinner*

► *SHA+*

► *Spa Package*

► *In-Room Breakfast*



02_{nd}

TRIP COUNTER 03_{rd} DAYS

TRIP DISTANCE 55KM



Highlights



► Trip to Hua Hin Hills Vineyard, home to the award-winning Monsoon Valley label and a range of labels marketed as 'new latitude wines'. Hugged by mountain ranges and endless expanse of greenery, a delightful excursion, complete trip with wine-tasting and Lunch.

► Gourmet dinner provided in Hotel, menu according to your personal preferences

► Ha Hin side-seeing by night



HOTEL

Cape Nidhra Hotel



03E

TRIP COUNTER 04 DAYS

TRIP DISTANCE 197KM

KM COUNTER 955

► Hua Hin

► Phra Nakhon Khiri

► Kancanaburi



Highlights



POI

- Cha Am
- Khao Wang (Historical Par)
- Wat Phra Pathom Chedi
- Kanchanaburi



HOTEL

X2 River Kwai Resort ★★★★★



03E

2 Night Stop

TRIP COUNTER

04 DAYS

X2 RIVER KWAI RESORT



► *Luxe Cabin Suite*

► *Rating 4.5*

► *5-Course Dinner*

► *SHA+*

► *In-Room Massage*

► *In-Room Breakfast*



03rd

TRIP COUNTER 05 DAYS

TRIP DISTANCE 78KM



Highlights



- ▶ We'll visit Burma Railway "Death Railway" bridge built by Allied POWs during WWII and immortalized in Bridge Over the River Kwai.
- ▶ For the final stop of the day, we'll visit the The Erawan Waterfall and the Pratat cave with its dramatic stalactites and stalagmites park.
- ▶ You can spoil yourself with a luxurious selection of treatments that include herbal scrubs and traditional Thai massages.

HOTEL

X2 River Kwai Resort ★★★★★



04

TRIP COUNTER
06 DAYS

TRIP DISTANCE 174KM

KM COUNTER
1207

► Uthai Thani

► Nakhon Sawan

► Kamphaeng Phet



Highlights



POI

- Paradise Park
- Kamphaengphet Historical Park
- Wat Maha That
- Sukhothai Historical Park



HOTEL

Sriwilai Sukhothai



04th

1 Night Stop

TRIP COUNTER

06^{DAYS}

SRIWILAI SUKHOTHAI



► *Suite Room*

► *Rating 4.8*

► *5-Course Dinner*

► *SHA+*

► *Spa Package*

► *In-Room Breakfast*



051

TRIP COUNTER
07 DAYS

TRIP DISTANCE 361KM

► Sukhothai

► Lampang

► Chiang Mai

KM COUNTER
1568



Highlights



POI

- Doi Khun Tan National Park
- Wat Tha Sung
- Khao No-Khao Kaeo
- Wat Phra That Haripunchai



HOTEL

137 Pillars House Chiang Mai ★★★★★



05E

3 Night Stop

TRIP COUNTER

07 DAYS

137 PILLARS HOUSE



► *David Fleming Macfie Suites*

► *Rating 4.9*

► *6-Course Dinner*

► *SHA+*

► *Health and Wellbeing*

► *In-Room Breakfast*



05 Feb

TRIP COUNTER
08 DAYS

TRIP DISTANCE 10KM



Highlights



FOI

- ▶ Chiang Mai Night Safari
- ▶ Chiang Mai Night Market
- ▶ Monks' Evening Chant
- ▶ Dinner Cruise on the Ping River



HOTEL

137 Pillars House Chiang Mai ★★★★★



051

TRIP COUNTER
09 DAYS

TRIP DISTANCE 45KM

► Chiang Mai Round Trip



Highlights



FOI

- Chiang Mai Side-seeing Trip
- Doi Inthanon Day Trip
- Chiang Mai by Night
- Doi Inthanon



HOTEL

137 Pillars House Chiang Mai ★★★★★



06E

TRIP COUNTER 10 DAYS

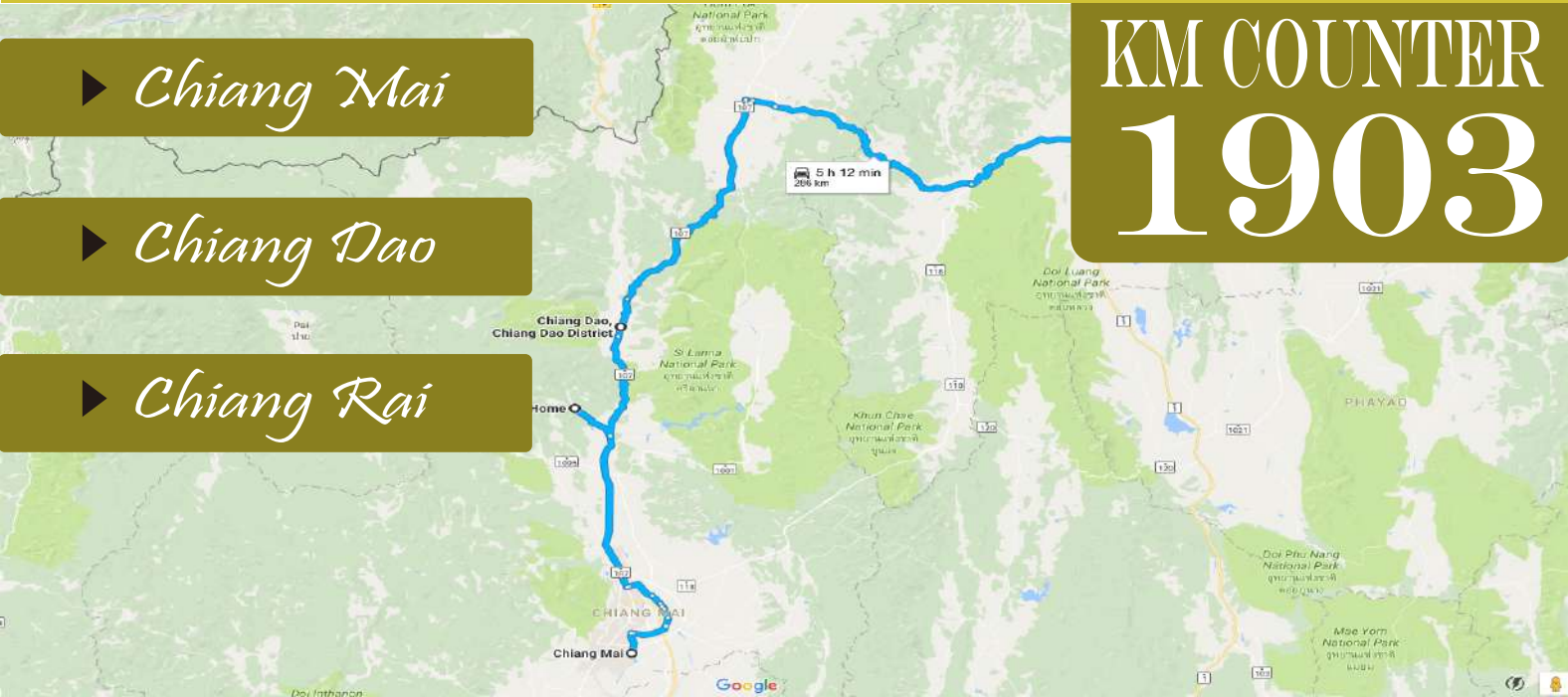
TRIP DISTANCE 286KM

► *Chiang Mai*

► *Chiang Dao*

► *Chiang Rai*

KM COUNTER 1903



Highlights



POI

- *Chiang Rai's Elephant Sanctuary.*
- *Wat Rong Khun*
- *Wat Phra Kaeo (Temple of Emerald Buddha)*
- *Chiang Rai*



HOTEL

Le Meridien Chiang Mai Resort ★★★★★



06E

2 Night Stop

TRIP COUNTER

10 DAYS

LE MERIDIEN CHIANG MAI RESORT



► *Suite Room*

► *Rating 4.6*

► *5-Course Dinner*

► *SHA+*

► *Spa Package*

► *In-Room Breakfast*



06E

TRIP COUNTER 11 DAYS

TRIP DISTANCE 89KM



Highlights



POI

- ▶ Golden Triangle
- ▶ Mekong River
- ▶ Chiang Khong
- ▶ Chiang Rai by Night



HOTEL

Le Meridien Chiang Mai Resort



0701

TRIP COUNTER 12 DAYS

TRIP DISTANCE 456KM

► Chiang Rai

► Rong Kwang

► Phitsanulok

KM COUNTER 2454



Highlights



POI

- Doi Luang National Park
- Phrae
- Uttaradit
- Phitsanulok



HOTEL

Shinnabhura Boutique Hotel



07E

1 Night Stop

TRIP COUNTER

12 DAYS

SHINNABHURA BOUTIQUE HOTEL



► *Royal Suite*

► *Rating 4.6*

► *5-Course Dinner*

► *SHA+*

► *In-Room Massage*

► *In-Room Breakfast*



08E

TRIP COUNTER 13 DAYS

TRIP DISTANCE 456KM

► Phitsanulok

► Lom Sak Route

► Udon Thani

KM COUNTER 2910



Highlights



POI

- Wat Pha Sorn Kaew
- Wat Phra Kaeo
- Phitsanulok-Lom Sak Route
- Udon Thani



HOTEL

De Princess Hotel Udonthani ★★★★★



08E

1 Night Stop

TRIP COUNTER

13 DAYS

DE PRINCESS HOTEL UDON THANI



► *Suite Room*

► *Rating 4.6*

► *5-Course Dinner*

► *SHA+*

► *In-Room Massage*

► *In-Room Breakfast*



09 POI

TRIP COUNTER 14 DAYS

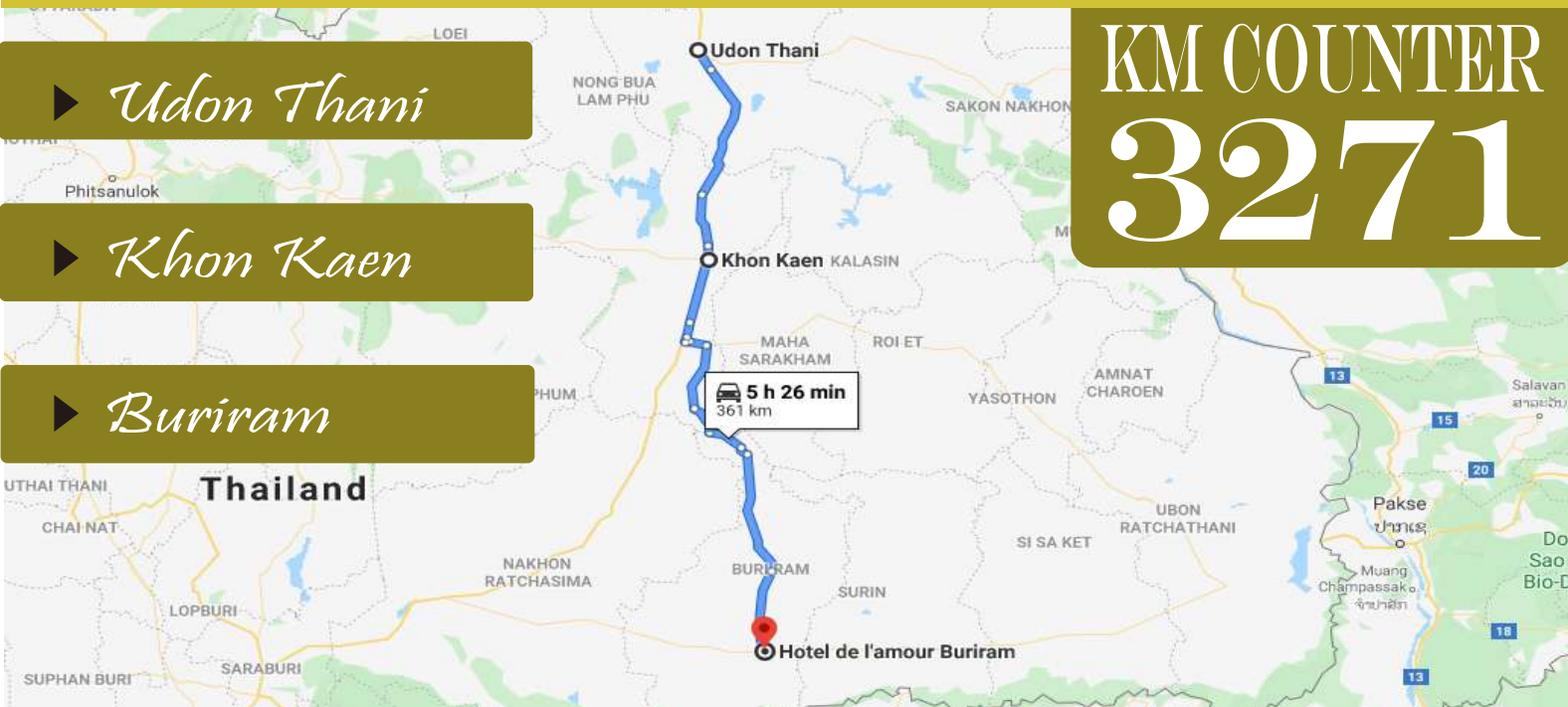
TRIP DISTANCE 361KM

► Udon Thani

► Khon Kaen

► Buriram

KM COUNTER 3271



Highlights



POI

- Wat Pa Kham Hua Chang
- Khonkaen Zoo
- Wat Thung Setthi
- Buriram



HOTEL

Hotel de l'amour Buriram



0901

1 Night Stop

TRIP COUNTER

14 DAYS

HOTEL DE L'AMOUR BURIRAM



► *Suite Room*

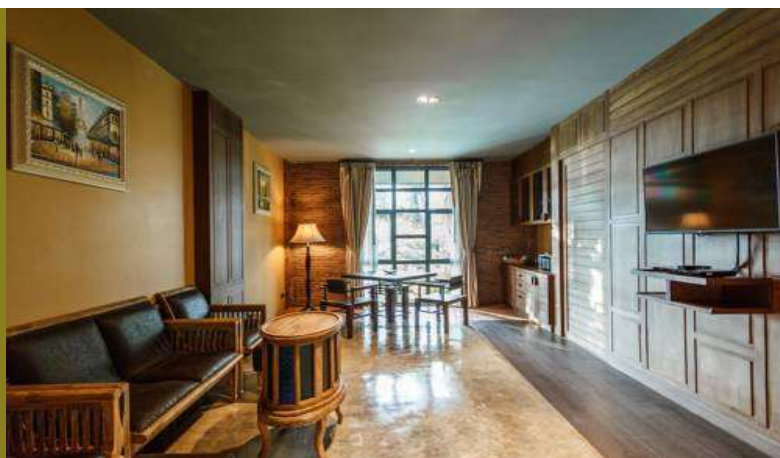
► *Rating 4.5*

► *5-Course Dinner*

► *SHA+*

► *Spa Package*

► *In-Room Breakfast*



101

TRIP COUNTER 15 DAYS

TRIP DISTANCE 463KM

KM COUNTER 3734

► *Buriram*

► *Saraburi*

► *Bangkok*



Highlights



POI

- *Khao Kradong Forest Park*
- *Jim Thompson Farm*
- *Gran Monte Vineyard and Winery*
- *Bangkok*



HOTEL

The Peninsula Bangkok



101

TRIP COUNTER
16 DAYS

TRIP DISTANCE 0 KM



Highlights

Instagram Facebook Twitter WhatsApp

Instagram Facebook Twitter WhatsApp

101

- ▶ Tailored Bangkok Round Trip
- ▶ Dinner at Peninsula



HOTEL

The Peninsula Bangkok



10E

3 Night Stop

TRIP COUNTER

15 DAYS

THE PENINSULA BANGKOK



► *Grand King Suite*

► *Rating 4.8*

► *6-Course Dinner*

► *SHA+*

► *Health and Wellbeing*

► *In-Room Breakfast*



101

TRIP COUNTER

17 DAYS

TRIP DISTANCE 0 KM



Highlights



101

► there are a wide variety of activities to choose from.
Whether you like shopping or to entertainment ...



HOTEL

The Peninsula Bangkok



11FOI

TRIP COUNTER 18DAYS

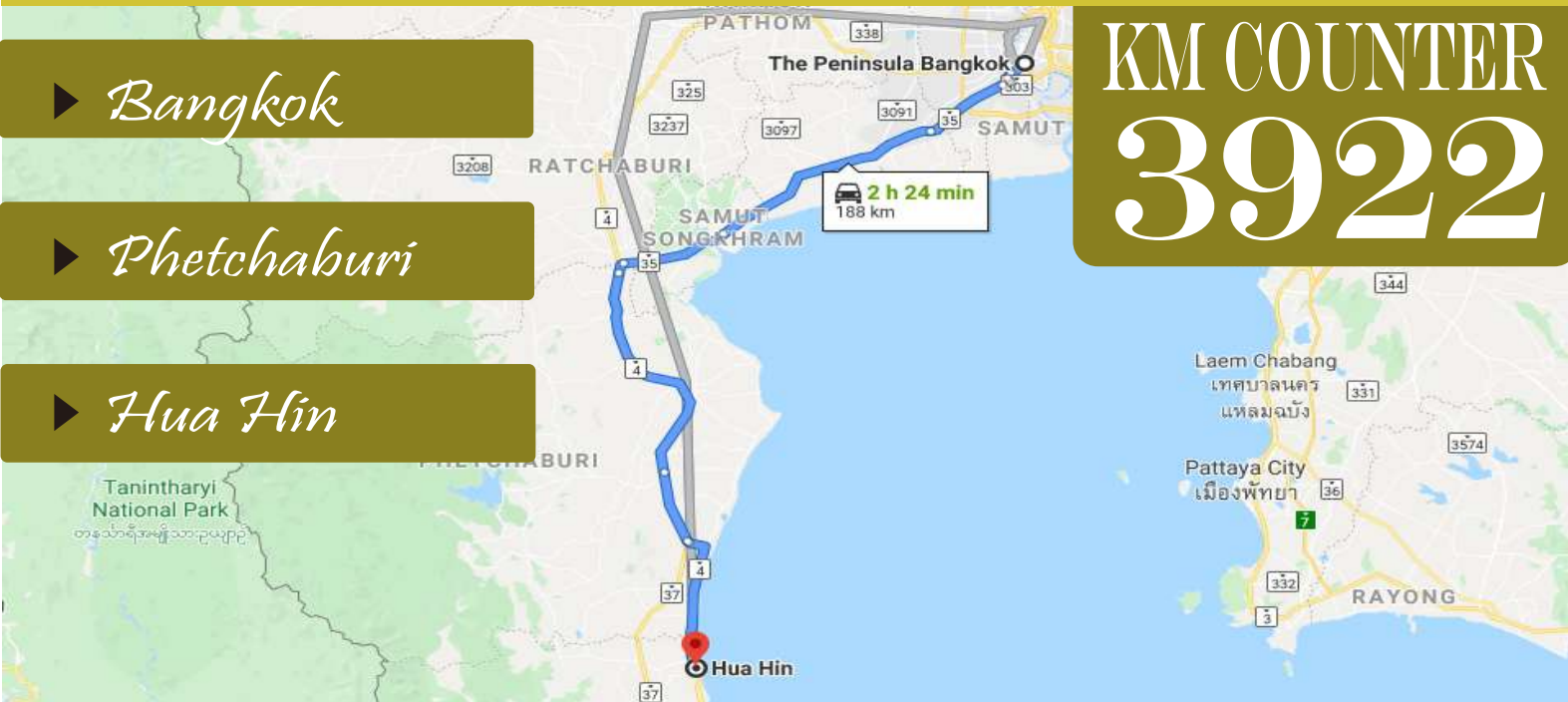
TRIP DISTANCE 188KM

► Bangkok

► Phetchaburi

► Hua Hin

KM COUNTER 3922



Highlights



FOI

- Damnoen Saduak Floating Market
- Wildlife Friends of Thailand
- Hua Hin By Night



HOTEL

Cape Nidhra Hotel ★★★★★



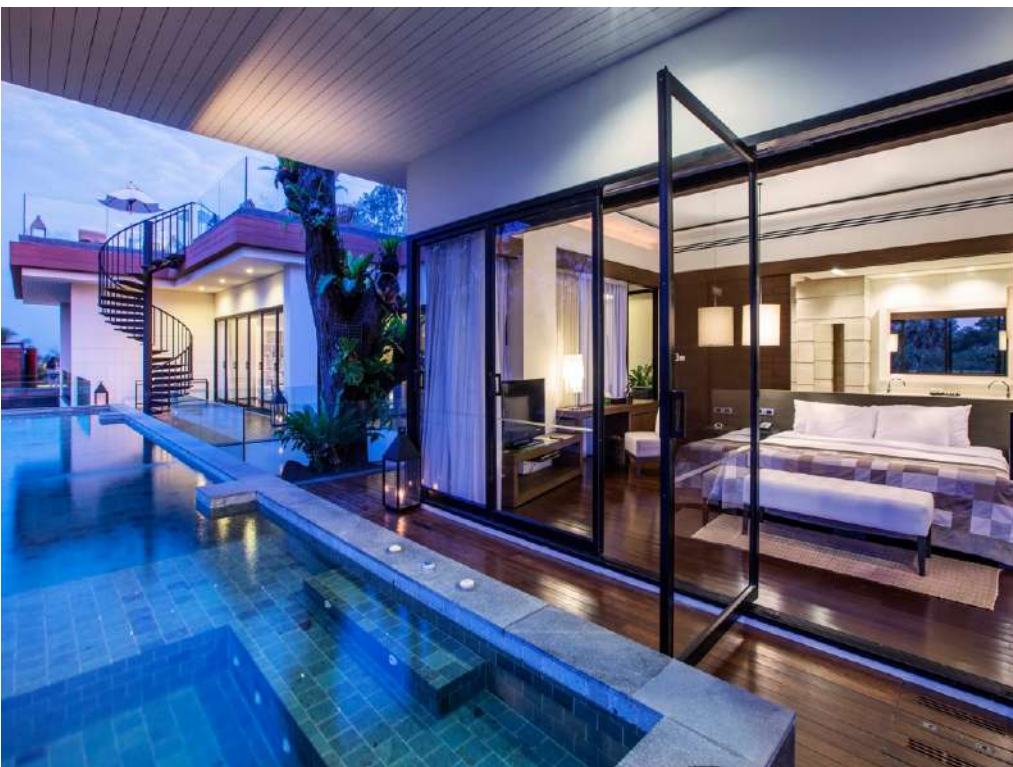
1101

1 Night Stop

TRIP COUNTER

18 DAYS

CAPE NIDHRA HUA HIN



► *Nidhrarom Suite*

► *Rating 4.7*

► *5-Course Dinner*

► *SHA+*

► *In-Room Massage*

► *In-Room Breakfast*



12th

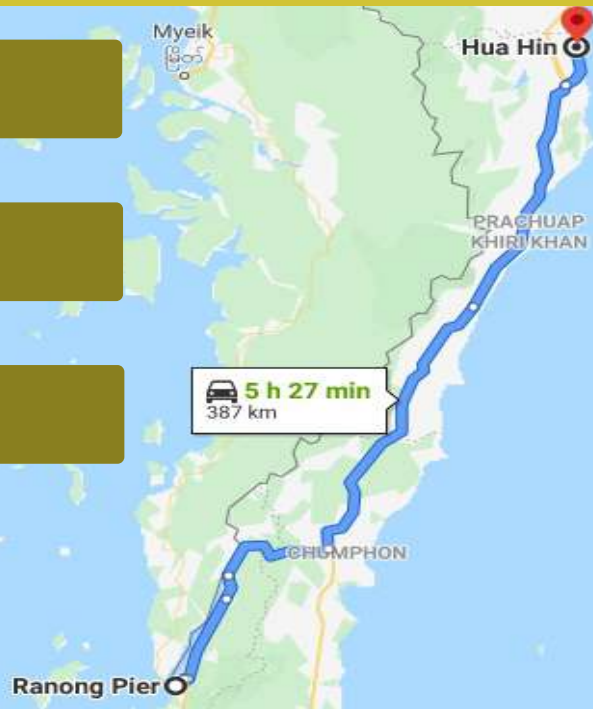
TRIP COUNTER 19 DAYS

TRIP DISTANCE 387KM

► Chumpon

► Ranong

► Myanmar



KM COUNTER 4309

Highlights



POI

- Grand Andamann Pier
- Thailand Visa Extension
- Speed Boat to Pulo - Myanmar (Burma)
- Covid-19 - Update - Rerouting Possible



HOTEL

Grand Andaman Ranong - Myanmar ★★★★★



12th

1 Night Stop

TRIP COUNTER

19 DAYS

GRAND ANDAMAN HOTEL



► *Nidhrarom Suite*

► *Rating 4.5*

► *5-Course Dinner*

► *SHA+*

► *Spa Package*

► *In-Room Breakfast*



13th

TRIP COUNTER 20 DAYS

TRIP DISTANCE 290KM

► *Ranong*

► *Khao Lak*

► *Phuket*



KM COUNTER 4599

Highlights



POI

- *Rannong*
- *Phu Khao Ya*
- *Tsunami Memorial Museum Khao Lak*
- *Arrival Phuket*



Our mission is to make sure that each single element of your trip will perfectly fit your expectations – every detail will always be individually arranged with you before and during your trip. We perfectly understand that travelers can often consider lack of schedule... just the best plan. Enjoying silence of majestic temples or bustle of vibrant Asian cities are always pretty unique experience so we're well aware, you may consider some places are worth more of your time than the others.

20 DAYS

ALL INCLUSIVE € 11990(EUR) Per Person

► Prices : Valid from 01.August 2021 until 30.May 2021

Prestige

LEXUS Lm300h

► 2 Passengers

€ 19.890(EUR)pp

Luxury

THAIYARNYON T69

► 2 Passengers

€ 17.880(EUR)pp

Executive

CARAVELLE T6

► 2 Passengers

€ 14.890(EUR)pp

Double or Twin Room

► 4 Passengers

€ 13.890(EUR)pp

► 4 Passengers

€ 11.990(EUR)pp

2 x Double or 2 x Twin Room

Above Price Includes:

- Accommodation with daily breakfast, and dinner at selected hotels and restaurants.
- 4 Packages with Massage and Spa.
- 2 Health and well-being; physiotherapy, holistic and nutrition treatment packages.
- Free Fitness access in all Hotels.
- Private tours, transfers and all services.
- Services of private driver and guides.
- 24H Service of English speaking staff.
- Entrance fees for all mentioned sights.
- 1 piece of baggage of up to 30kg pp.

Above Price Excludes:

- International flight into and out Thailand.
- Meals other than those mentioned in the itinerary.
- Personal expenses (such as laundry, telephone, drinks, etc.).
- Tips for guides and drivers.
- Personal travel insurance.
- Thailand, Myanmar & Laos Visa fees.

Propose a schedule that at anytime can be modified just to suit your needs. Since being in a hurry is far away from typical Thai style, we'll do our best to secure your daily comfort while experiencing culture so distinctly different from Western one.

Your satisfaction will be always highest priority.

► **Departures & Reservations:** The date in which you choose to travel on is flexible and therefore can be delayed or moved forward free of charge. We're aware that there is a lot of stress about planning a holiday during Covid-related travel restrictions. In light of the Covid issues, we are therefore adopting a very flexible policy that will allow you to delay or move forward trip free of charge at no extra cost.

► **Terms & Conditions** We require a deposit of 50% of total balance to guarantee the reservation, the deposit shall be paid via PayPal, Credit Card or Wired Transfer. The outstanding balance 50% shall be settled 15 to 30 days before departure day.

► Legal Representative & Tour Organization

Max&Nga Co.Ltd., Thailand, Phuket, Phone Int. +66 91 821 9041, Phone, Thai +66 90 972 9049. Address 97/20-21, Thep Krasat Tri-Nai Yang Rd., Moo 1, Tambon Sa Khu, Thalang District, Phuket, 83110 Nai Yang, Phuket Airport, operating under a brand name TourTH.

► Traveling to Thailand Requirements

Register for the Thailand Pass at <https://tp.consular.go.th/> Please visit <https://consular.mfa.go.th/th/content/thailand-pass-faq-2> for details on the Thailand Pass.

The Royal Thai Embassy would like to recommend you to register for the Thailand Pass 7 working days in advance for the concerned authorities in Thailand to consider and approve the Thailand Pass.

To follow-up with the status of your registration please contact support@tp.consular.go.th or call +662 572 8442.



- **Head Office Thailand**
Phone +66 91 821 9041
+66 90 972 9049
- **www.TourTH.com**
ClubVoyage41@gmail.com
- **Global Sales Offices**

select it from the list below

Switzerland
Germany
Holland
Denmark
Sweden

- **Follow Us**



Club Voyage 41

TOURTH.COM
Bespoke Luxury Travel